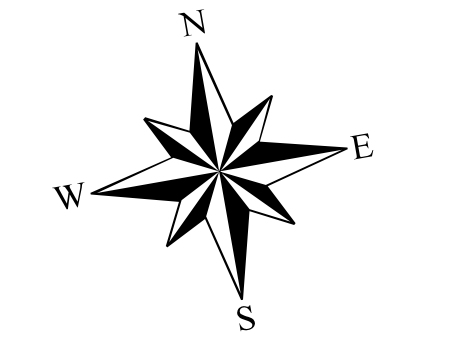


# Highway 6 and 401 Improvements Study Area

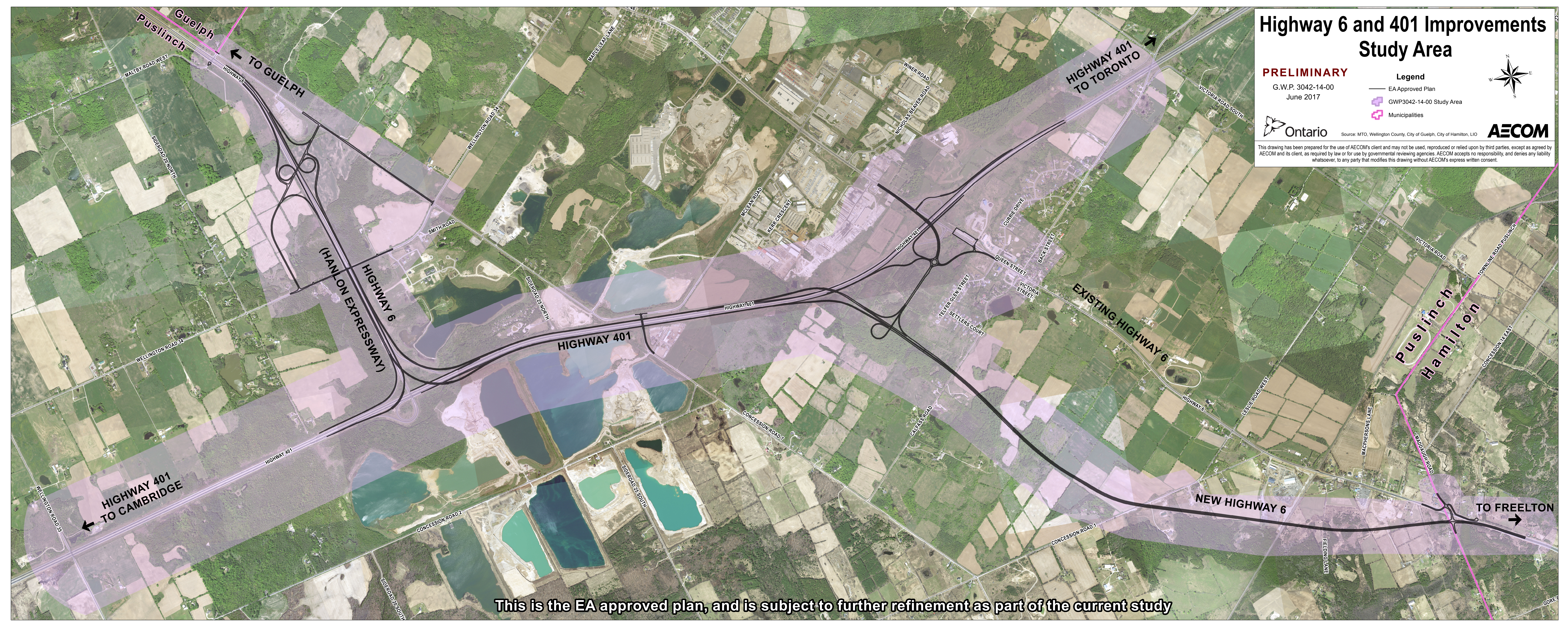
**PRELIMINARY**  
G.W.P. 3042-14-00  
June 2017

- Legend**
- EA Approved Plan
  - GWP3042-14-00 Study Area
  - Municipalities



Ontario Source: MTO, Wellington County, City of Guelph, City of Hamilton, LIO **AECOM**

This drawing has been prepared for the use of AECOM's client and may not be used, reproduced or relied upon by third parties, except as agreed by AECOM and its client, as required by law or for use by governmental reviewing agencies. AECOM accepts no responsibility, and denies any liability whatsoever, to any party that modifies this drawing without AECOM's express written consent.



This is the EA approved plan, and is subject to further refinement as part of the current study