

Highways 6 and 401 Improvements Study Area

G.W.P. 3042-14-00
July 5, 2017

Legend

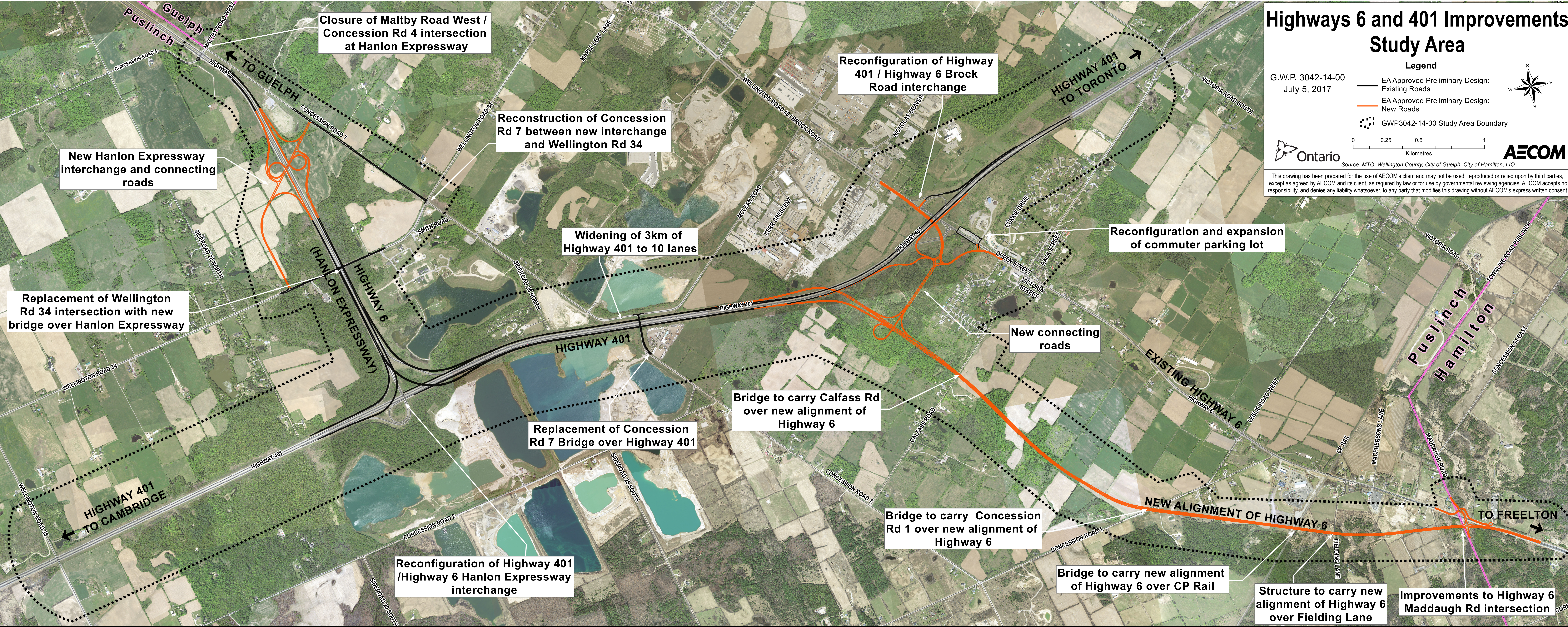
- EA Approved Preliminary Design: Existing Roads
- EA Approved Preliminary Design: New Roads
- GWP3042-14-00 Study Area Boundary

0 0.25 0.5 1
Kilometres

Source: MTO, Wellington County, City of Guelph, City of Hamilton, LIO

AECOM

This drawing has been prepared for the use of AECOM's client and may not be used, reproduced or relied upon by third parties, except as agreed by AECOM and its client, as required by law or for use by governmental reviewing agencies. AECOM accepts no responsibility, and denies any liability whatsoever, to any party that modifies this drawing without AECOM's express written consent.



New Hanlon Expressway interchange and connecting roads

Replacement of Wellington Rd 34 intersection with new bridge over Hanlon Expressway

Closure of Maltby Road West / Concession Rd 4 intersection at Hanlon Expressway

Reconstruction of Concession Rd 7 between new interchange and Wellington Rd 34

Widening of 3km of Highway 401 to 10 lanes

Reconfiguration of Highway 401 / Highway 6 Brock Road interchange

HIGHWAY 401 TO TORONTO

Reconfiguration and expansion of commuter parking lot

New connecting roads

Bridge to carry Calfass Rd over new alignment of Highway 6

Replacement of Concession Rd 7 Bridge over Highway 401

Bridge to carry Concession Rd 1 over new alignment of Highway 6

Bridge to carry new alignment of Highway 6 over CP Rail

Structure to carry new alignment of Highway 6 over Fielding Lane

Improvements to Highway 6 Maddaugh Rd intersection

Reconfiguration of Highway 401 / Highway 6 Hanlon Expressway interchange

HIGHWAY 401 TO CAMBRIDGE

NEW ALIGNMENT OF HIGHWAY 6

TO FREELTON

Puslinch Hamilton